

PRODUCT INFORMATION: IntelliRay Quad UV Flood



- Large 16" x 12" cure area
- 110mW/cm² @ 4"
- 4 long life arc lamps
- Optional cure chamber
- Microprocessor control
- Control via PC or PLC option
- Foot Pedal Control option
- Powerful 600W lamps

The *INTELLIRAY QUAD* is a large programmable UV flood curing system designed with powerful 600 Watt lamps. The *INTELLIRAY QUAD* integrates all system components into a single unit that can be easily mounted on the optional Raven Quad chamber, or anywhere on the factory floor with virtually no cabling or remote control boxes required. Just mount the head, connect the AC line cord, and start timed exposure curing! The system contains an integrated retractable shade type shutter, which allows for repeatable exposure timing and shields the user from UV radiation. The system's LCD display and digital keypad make programming and monitoring of curing operations a *snap*. The long life 600-Watt metal halide type lamp illuminates a 16" x 12" curing area with evenly distributed 110 mW/cm² UVA light at the standard UV cure peak wavelength 365nm.

IntelliRay Quad shown
with Raven Quad
UV cure chamber



Features:

System Timers

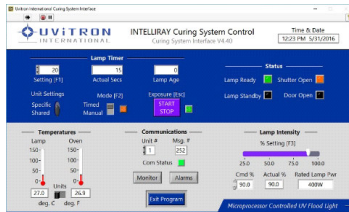
Duration of curing is controlled by a 1 to 9999 second or hour exposure timer that actuates the shutter. The exposure timer also has a user controlled manual mode in which exposure time increments on the display to indicate elapsed time of a cure. A second timer is used to display the age of the lamp in hours, and triggers a light to warn the user when the lamp should be replaced.

Lamp Intensity Control

The system has a user adjustable intensity level. This feature provides the flexibility of choosing appropriate curing intensity for sensitive materials.

Standby mode

The unit automatically reduces lamp power by one half when the shutter is closed. This reduces excessive heat and therefore increases life of system components, without the need to power down.



Status Indicators

Four front panel LEDs are provided: Lamp ready, system in standby mode, shutter open, and system alarm.

- **External logic signal interface**

The system can be remotely monitored and controlled using logic signals available at a 15-pin D-sub connector on the unit's rear panel. The digital logic functions allow high-speed control of the IntelliRay for applications requiring a direct interface with machine controllers or PLCs.

- **Remote control via PC serial port**

The system can also be remotely controlled via an RS232 / RS485 serial port. A Windows™ compatible graphical interface program allows all system functions to be exercised (see photo), and with RS485, multiple units can be networked.

- **Foot pedal control**

An optional shutter control foot pedal is available for applications requiring hands-free operation. The pedal can be used in conjunction with the system's exposure timer, or in a manual mode in which the shutter remains open as long as the pedal is pressed.

- **Lamp power regulation**

The system's switch mode power supply maintains constant lamp power regardless of variations in AC line input or lamp voltages. The result is repeatable curing times throughout the life of the lamp.

- **Auto-Range AC line input**

The *Auto-Ranging* 90-132 / 180-265 VAC line input makes the Uvitron *INTELLIRAY Quad* easy to use in any country, with no wiring changes or voltage select switching required.

- **Forced air cooling**

A baffled fan cooling system with removable filter channels cooling air appropriately to all components to insure high system reliability.

- **Optional lamp spectrums**

The IntelliRay Quad includes four 600 Watt UVA, UVB or visible spectrum lamps, which ensure compatibility with all adhesives and coatings.